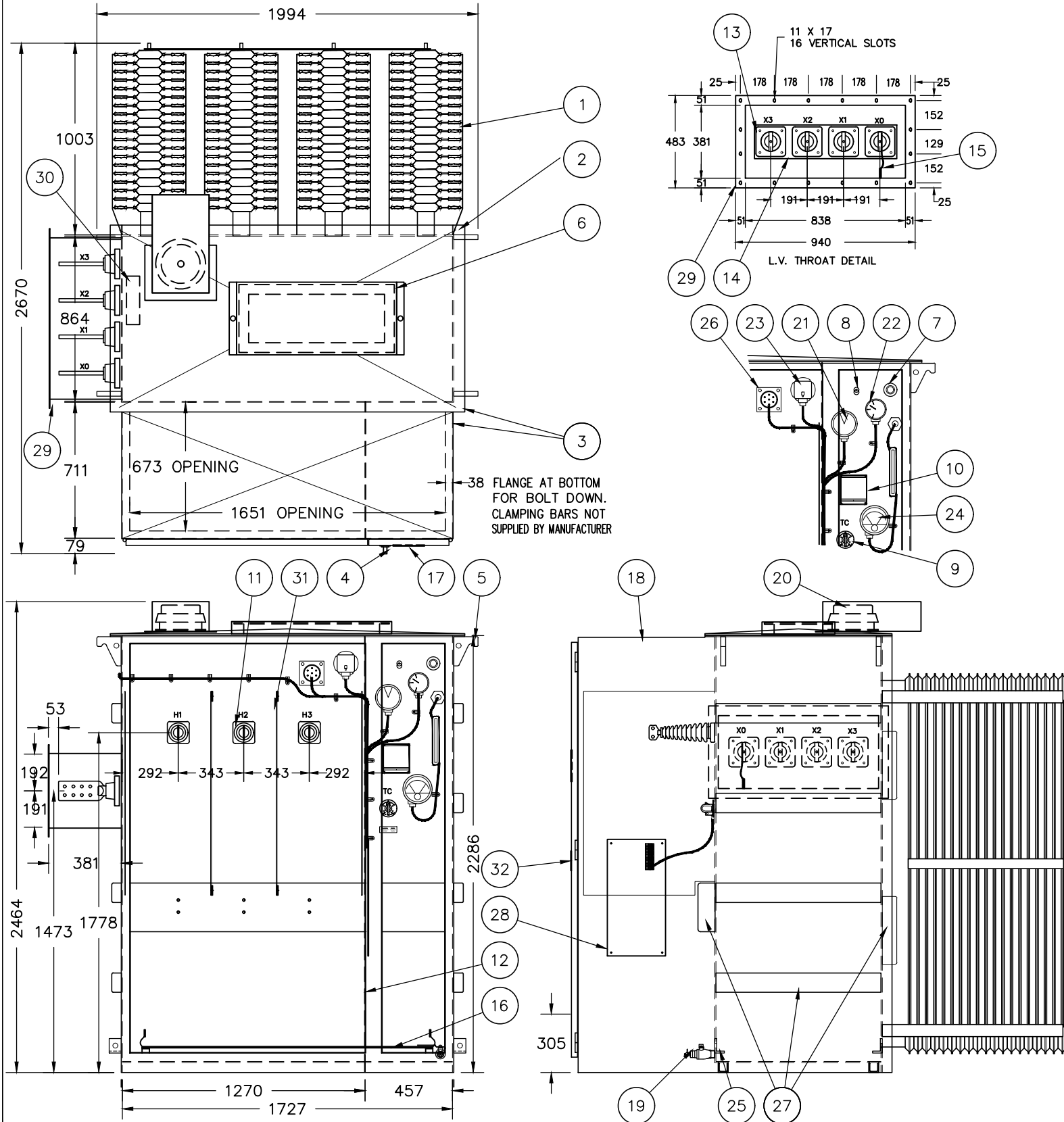


TYPE **ONAN - 3 PHASE PADMOUNT** kVA **3000/3360** H.V. **27600 DELTA** BIL **150 kV** L.V. **600Y/347** BIL **30 kV** TEMP.RISE **55/65°C** FREQ. **60 Hz.** TAPS. **4- 2 1/2% (2FCAN,2FCBN)** MASS **8170 kg.** OIL **2970 L.**



- 1- NON-REMOVABLE COOLING RADIATORS
- 2- RIVETED TANK COVER
- 3- INTEGRAL TANK & ENCLOSURE, NOT SEPARABLE
- 4- TAMPERPROOF ENCLOSURE DOORS C/W GROUNDING, 90° & 110° HOLD OPEN DEVICE, PADLOCKING HANDLE AND 2 ~ 1/2"-13 PENTAHEAD BOLTS C/W FIX CUPWASHERS
- 5- TRANSFORMER LIFTING LUGS
- 6- HANTOLE COVER ~ 254 X 559 OPENING, FIXED WITH 2 PENTAGONAL BOLTS
- 7- TOP FILTER-PRESS FLANGE, 1" NPT C/W BRASS PLUG
- 8- PRESSURE RELIEF VALVE ~ QUALITROL No. 201-020-08
- 9- EXTERNALLY OPERATED TAP SWITCH HOTSTICK HANDLE C/W WARNING DECAL
- 10- AL. NAMEPLATE C/W CONNECTION DIAGRAM
- 11- H.V. BUSHINGS C/W TWO HOLES SPADE, 25kV, 150 kV BIL (NOT EEMAC)
- 12- H.V. TO L.V. METAL BARRIER
- 13- L.V. BUSHINGS ~ EPOXY TYPE TIN PLATED C/W EIGHT HOLES SPADE
- 14- L.V. STAINLESS STEEL BUSHING PLATE
- 15- XO REMOVABLE GROUND STRAP
- 16- GROUND BUS C/W TEN 15mm DIA. HOLES C/W 2 CONNECTORS ~ BURNDY No. KPA28-CG2
- 17- WARNING LABELS AS PER EEMAC L16-1 ON THE INSIDE & OUTSIDE OF L.V. DOOR
- 18- ANTI-CONDENSATION MATERIAL ON INSIDE ENCLOSURE ROOF
- 19- BRONZE BALL DRAIN VALVE 1" NPT C/W SAMPLING DEVICE
- 20- PRESSURE RELIEF DEVICE ~ QUALITROL No. 208-60E C/W 1 CONTACT
- 21- LIQUID TEMPERATURE GAUGE ~ QUALITROL No. 167-278-01 C/W 2 CONTACTS
- 22- LIQUID LEVEL GAUGE ~ QUALITROL No. 035-053-01 C/W 1 CONTACT
- 23- RAPID RISE RELAY ~ QUALITROL No. 910-014-32 C/W SEAL-IN RELAL
- 24- WINDING TEMPERATURE GAUGE ~ QUALITROL No. 104-606-01 C/W 2 CONTACTS
- 25- JACKING STEPS C/W 25mm DIA. TOWING EYE
- 26- BUSHING FOR C.T. CONNECTION
- 27- EXTERNAL STIFFENERS
- 28- TERMINAL BLOCKS PLATE
- 29- L.V. THROAT C/W TOP OPENING 229 X 686 (OPENING IS NOT TAMPERPROOF)
- 30- X2 W.T.I. C.T., RATIO : 3500-5
- 31- GLASTIC BARRIERS
- 32- LAMACOID NAMEPLATE (MIDDLE OF L.V. DOOR)

NOTES :  
 PAINTED FINISH ~ ANSI 70 GREY  
 FRONT VIEW SHOWN WITH ENCLOSURE DOORS REMOVED  
 TRANSFORMER BUILT TO CUSTOMER'S SPECIFICATION AND CSA C227.2-88, FIG.4  
 EXCEPT L.V. BUSHING LOCATION  
 ALL DIMENSIONS IN MILLIMETER  
 ▲ L.V. THROAT WAS ON RIGHT SIDE. FEB-27-01. S.F.

ADDITIONS TO THE ABOVE TABLE WILL NOT AFFECT THE REVISION NUMBER OF THIS DRAWING.						
DUP./REF.	TITLE			DWG. NO.	REV.	
TOL.	±12mm			G1103B3849	1	
SCALE	1 = 24			DESIGNED BY S.F. 103B3849.DWG Printed 6/19/17 1:29:29 By Serge Fleury		
DRAWN	S.F.	DATE	JAN-12-01	TRANSFORMATEURS LTÉE		
CHECKED	<i>[Signature]</i>	DATE	JAN-12-01	<b>PIONEER</b>		
APP.	<i>[Signature]</i>	DATE	JAN-12-01	TRANSFORMERS LTD		