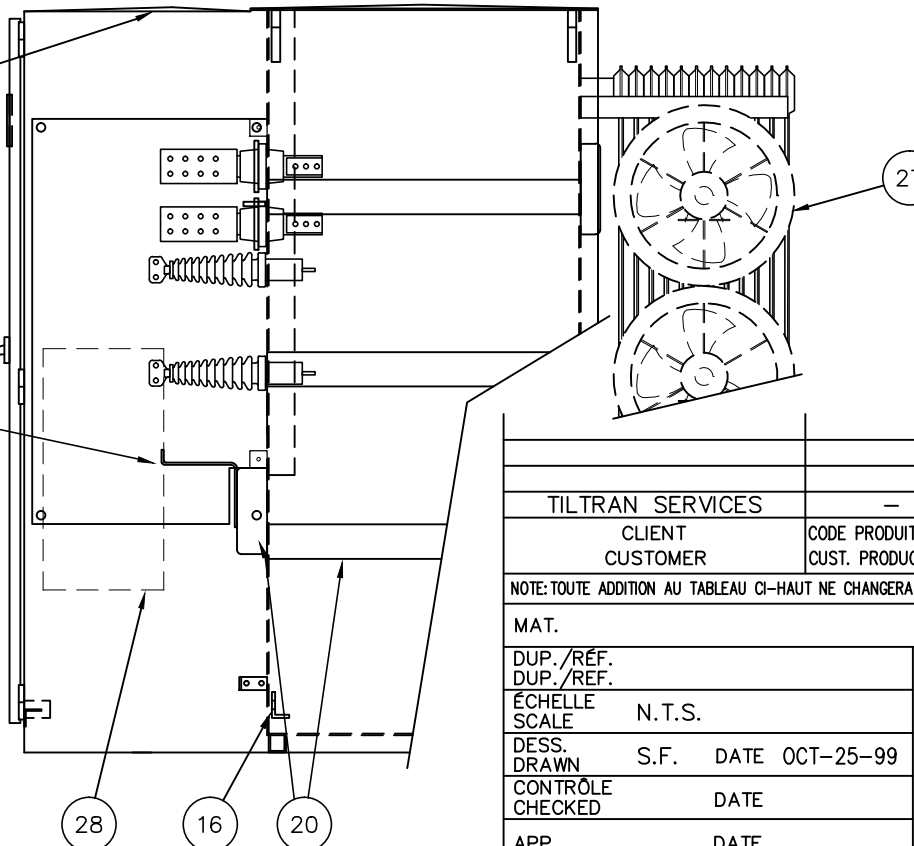
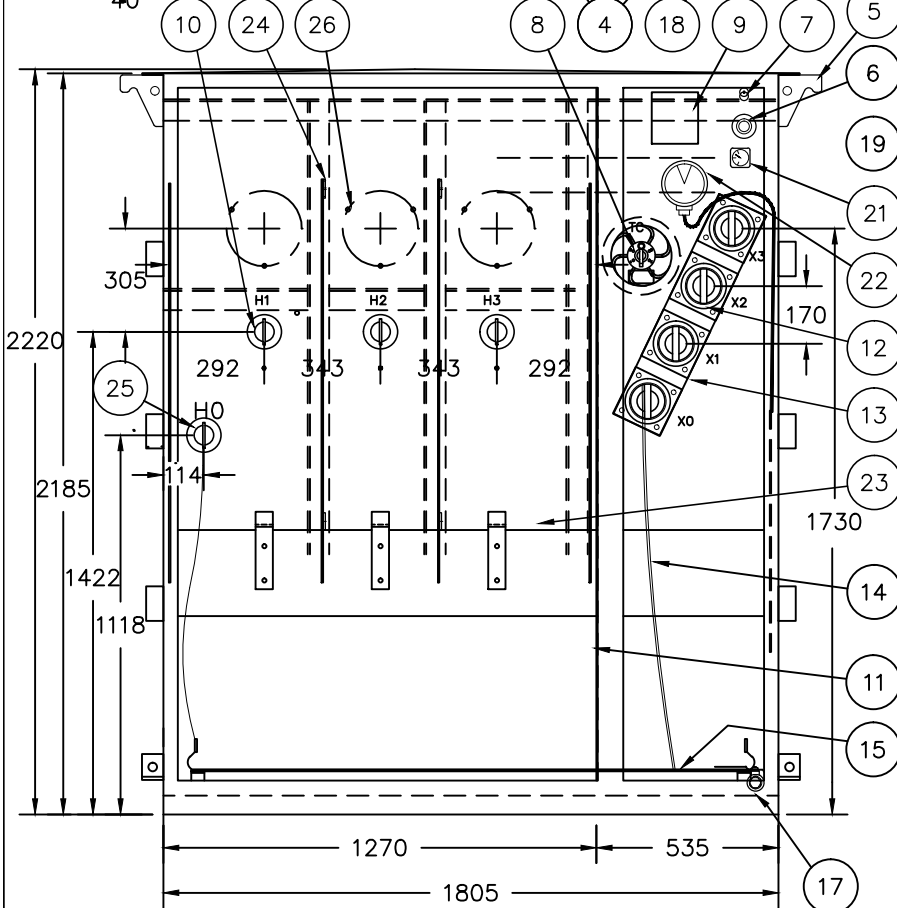
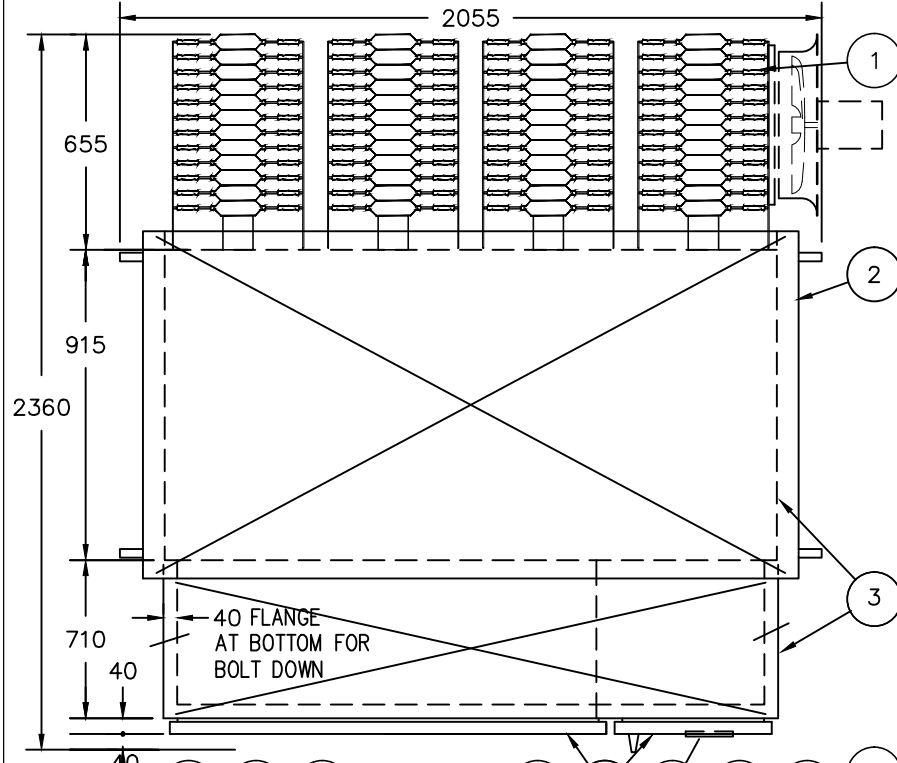


TYPE **ONAN/PROV. ONAF - 3 PHASE PADMOUNT** kVA **2500/PROV. 3333** H.V. **27600 GRD.Y/16000** BIL **150 kV** L.V. **600Y/347** BIL **30 kV** TEMP.RISE **65°C** FREQ. **60 Hz.** TAPS. **4- 2 1/2% (2FCAN,2FCBN)** MASS **7180 kg.** OIL **2915 L.**



- 1- TRANSFORMER COOLING RADIATORS (NON-REMOVABLE)
- 2- TRANSFORMER RIVETED COVER
- 3- INTEGRAL TANK & ENCLOSURE
- 4- TAMPERPROOF ENCLOSURE DOORS C/W GROUING, 90° & 110° HOLD OPEN DEVICE, L.V. DOOR PADLOCKING HANDLE AND 2 ~ 1/2"-13 PENTAHEAD BOLTS C/W FIXED CUPWASHERS
- 5- LIFTING LUGS
- 6- FILLER PLUG ~ 1" N.P.T. BRASS
- 7- PRESSURE RELIEF DEVICE ~ QUALITROL No. 201-020-08
- 8- EXTERNALLY OPERATED TAP SWITCH HANDLE C/W WARNING DECAL
- 9- NAMEPLATE AND CONNECTION DIAGRAM
- 10- H.V. BUSHINGS C/W 2 HOLES SPADE
- 11- H.V. TO L.V. METAL BARRIER
- 12- L.V. BUSHINGS ~ EPOXY TYPE C/W EIGHT HOLES SPADE TO C2-M91
- 13- L.V. STAINLESS STEEL BUSHING PLATE
- 14- XO GROUND STRAP
- 15- GROUND BUS C/W TEN 15mm DIA. HOLES
- 16- JACKING STEPS C/W 25mm DIA. TOWING EYE
- 17- BRONZE BALL DRAIN VALVE 1" N.P.T. C/W BRASS PLUG
- 18- ENGLISH WARNING DECALS AS ADOPTED BY EEMAC ON THE INSIDE & OUTSIDE OF THE L.V. DOOR
- 19- ANTI-CONDENSATION MATERIAL ON INSIDE ENCLOSURE ROOF
- 20- EXTERNAL STIFFENERS
- 21- OIL LEVEL GAUGE ~ QUALITROL No. 020-031-01
- 22- TOP LIQUID TEMPERATURE GAUGE ~ QUALITROL No. 167-279-01 C/W 3 CONTACTS
- 23- CABLE SUPPORTS
- 24- GLASTIC BARRIER BETWEEN BUSHINGS
- 25- HO INSULATED BUSHING C/W STRAP TO GROUND BAR
- 26- L/A STUDDING (1/2"-13 X 1 5/8" STUD ON A 8 1/2" D.B.C.)
- 27- FUTURE FANS LOCATION (NOT TAMPERPROOF)
- 28- TERMINAL PLATE

PAINTED FINISH ~ ASA 70 GREY
 FRONT VIEW SHOWN WITH ENCLOSURE DOORS REMOVED
 UNIT BUILT TO CUSTOMER'S SPECIFICATIONS AND CSA C227.2-88-FIG 4.
 EXCEPT FANS AND TANK WIDTH.
 ALL DIMENSIONS IN MILLIMETER

TILTRAN SERVICES		-	11047	1	40-109-507	G10995-1	-
CLIENT	CODE PRODUIT CLIENT	NO. DE COMMANDE	ITEM	No. SOUMISSION	No. DE SÉRIE	No. DE NORME	
CUSTOMER	CUST. PRODUCT CODE	PURCH. ORDER NO.	ITEM	QUOTATION No.	SERIAL No.	SPEC. No.	
NOTE: TOUTE ADDITION AU TABLEAU CI-HAUT NE CHANGERA PAS LE NUMERO DE REVISION DE CE DESSIN. ADDITIONS TO THE ABOVE TABLE WILL NOT AFFECT THE REVISION NUMBER OF THIS DRAWING.							
MAT.		TITRE/TITLE				NO. DESSIN/DWG. NO.	
DUP./REF.		TRANSFORMER OUTLINE				G1103B3831	
DUP./REF.		AS PER C227.2-88, FIG.4				0	
ÉCHELLE		R:\ACAD\OL 103\103B3831.DWG Printed 3/18/15 2:09:37 By Pierre Sévigny					
SCALE		TRANSFORMATEURS LTÉE					
DESS. DATE		±12mm					
DRAWN S.F. DATE OCT-25-99		PIONEER					
CONTRÔLE DATE		TRANSFORMERS LTD					
CHECKED							
APP. DATE							