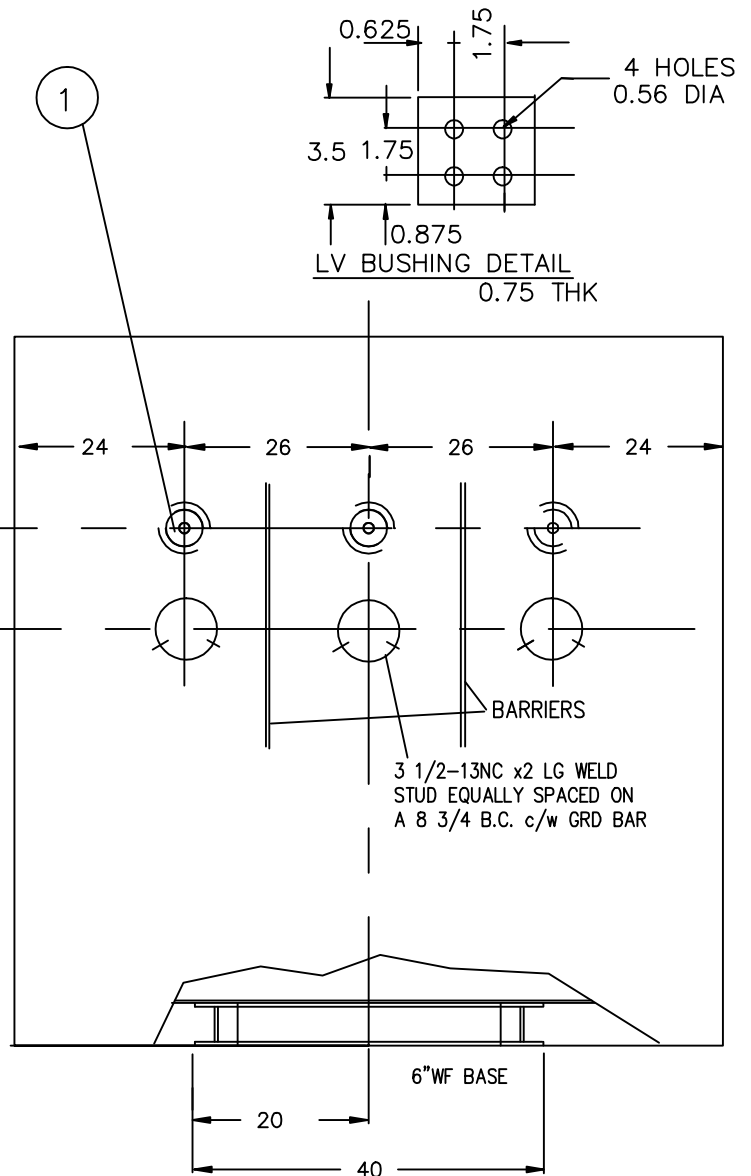
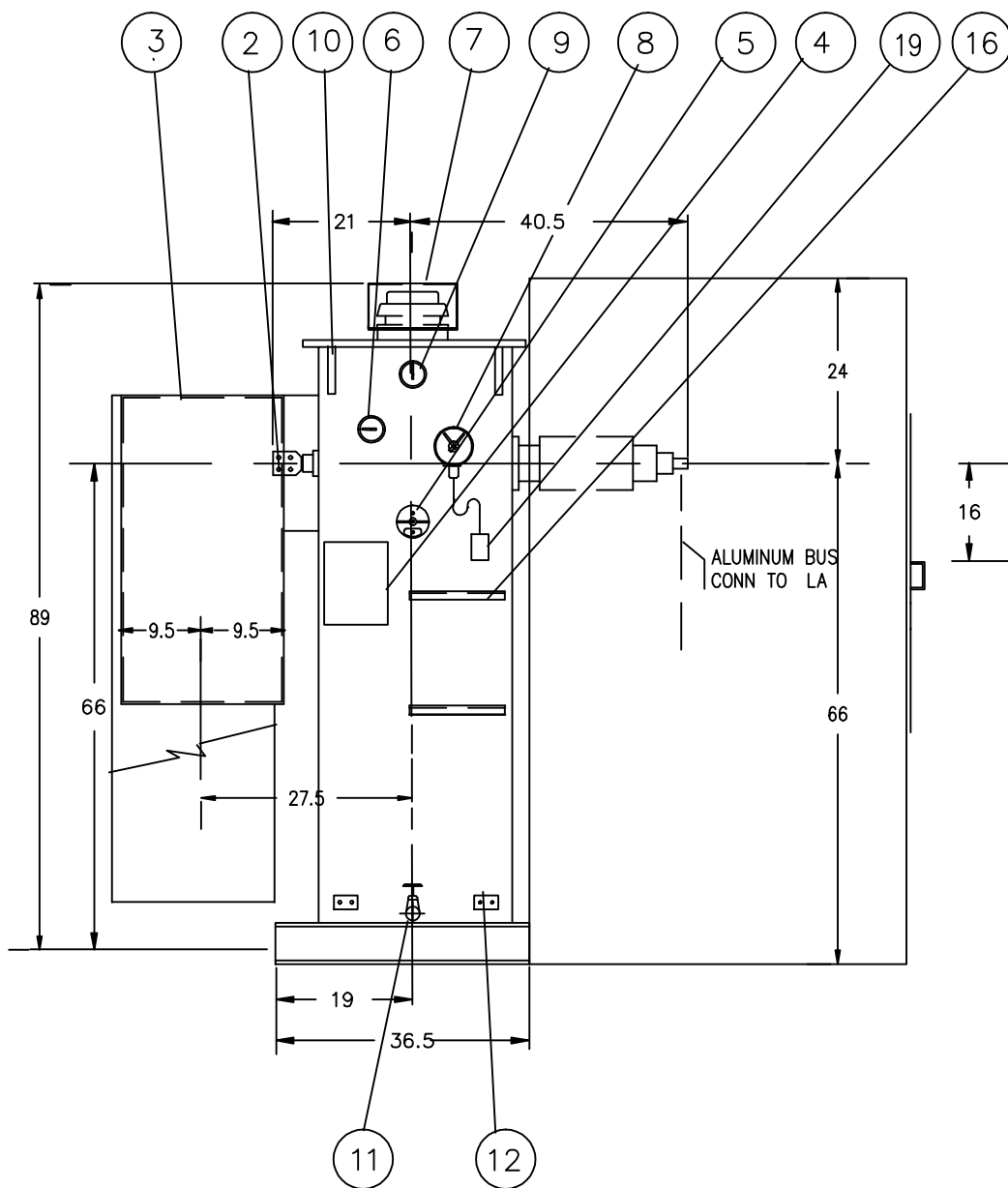


1. 3 HV BUSHINGS 46 KV400 A.  
N.T.# 1230 c/w 1 1/2-12 THREADED STUD  
2 1/2" LG. DOUBLE NUTS
2. 4 LV BUSHINGS 1.2 KV 2400 A.  
N.T.# 1045 SEE DETAIL
3. LV BOX 31.5x48x19 DP c/w FRONT  
ACCESS & ALUM BOTTOM ENTRY PLATES
4. RATING PLATE DWG. NO. TB-5183
5. TAP CHANGER HANDLE
6. MAGNETIC OIL GAUGE QUALITROL 1-30AC
7. PRESSURE RELIEF DEVICE  
QUALITROL 208-60U C/W SHROUD
8. TOP OIL THERMO. C/W 2 CONTACTS  
QUALITROL 167-224-01
9. PRESSURE-VACUUM GAUGE /w BLEEDER  
QUALITROL 70-35E
10. TRANSFORMER LIFTING LUGS
11. 1" DRAIN VALVE C/W 3/8" SAMPLER
12. 2 S.S. GROUND PADS c/w  
CONNECTERS FOR 2/0 CABLE
13. COOLING RADIATORS
14. 1" TOP FILTER PRESS CONNECTION, CAPPED
15. HANDHOLE C/W BOLTED COVER
16. PROVISION FOR MTG FAN CONTROL BOX
17. FUTURE FANS
18. HV BOX c/w OPEN BOTTOM, FRONT  
ACCESS PLATE, PROVISION FOR MT'G  
LA'S & TERMINATORS
19. TERMINAL BOX (10 x 10) SEE DWG. TA-5129



|      |  |     |         |
|------|--|-----|---------|
| 1    | CONN TO LA WAS CU. WARNING SIGN & GRD CONN ADDED | MS  | 6/28/91 |
| REV. | REMARKS  | BY: | DATE:   |

Northern Transformer  
INCORPORATED

TANK SIZE : 28 x 59 x 74 H.

PAINT : ASA 70 GREY

| ESTIMATED WTS        | lb    | kg   |
|----------------------|-------|------|
| CORE & COILS         | 7600  | 1955 |
| TANK & FITTINGS      | 4000  | 1820 |
| OIL 364 G. 1652 lit. | 3120  | 1415 |
| TOTAL                | 11420 | 5190 |

|            |                |               |                 |
|------------|----------------|---------------|-----------------|
| SCALE: 1=1 | DRAWN BY: MS   | DATE: 6/17/91 | REV. 1          |
| JOB: BGHV  | CHECKED BY: DS | DATE: 6-19-91 | S.O. NO. 91-699 |

TITLE: 1000 FUT 1333 KVA OIL FILLED TRANSFORMER  
44000-600Y/347V 3PH 60HZ 65°CRISE ONAN FUT AF

REEBOK CANADA

DRAWING NO.

TB-5182