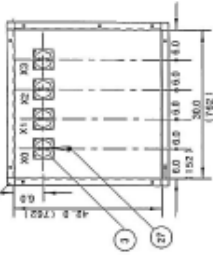


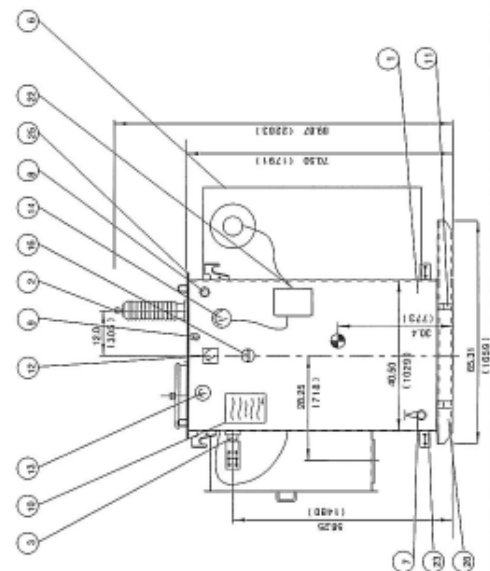
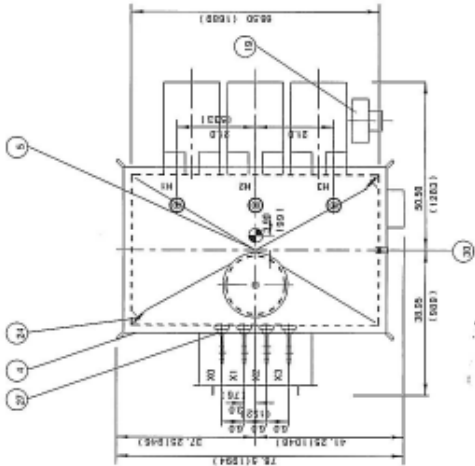
REVISIONS

REV. 1 2/18/1994  
 REV. 2 4/18/1994  
 REV. 3 7/18/1994

- ITEM DESCRIPTIONS
1. TRANSFORMER COMPARTMENT
  2. PRIMARY BUSHING 4KV DW 507 EYE  $\Delta$
  3. SECONDARY BUSHING 2500A CW 6 HOLE SPACE
  4. BOLTED COVER
  5. HANDLE 116.5 DIA
  6. RADIATOR
  7. OIL DRAIN VALVE WITH BRASS PLUG
  8. OIL FILL PLUG
  9. PRESSURE RELIEF VALVE
  10. NAMEPLATE ALUMINUM
  11. TANK SKID BASE - SUITABLE FOR SKIDDING
  12. OIL LEVEL GAUGE
  13. PRESSURE VACUUM GAUGE
  14. THERMOMETER WITH CONTACTS-3
  15. TAP SWITCH WITH PROVISION FOR PADLOCK
  16. COOLING FAN 120V 16 HP 1PH  $\Delta$
  17. FAN CONTROL BOX - FIBERGLASS 120V 1PH SUPPLY
  18. GROUND SPACES - 2 DIAGONALLY OPPOSITE
  19. COVER LIFTING LUGS
  20. TANK LIFTING LUGS
  21. JACKING AREA
  22. SECONDARY GROUND CABLE
  23. SECONDARY CABLE BOX WITH COVER & NON MAGNETIC CABLE ENTRY PLATE
  24. COVER GROUND STRAP



IV. CABLE BOX



- NOTES:
- 1- PAINT FINISHES FOR EQUIPMENT GREEN ACRYCOATE RS6810
  - 2- DIMENSIONS IN BRACKETS ARE IN INCH.
  - 3-  $\Delta$  INDICATES CENTER OF GRAVITY

WEIGHTS	LB	KG
CORE & COIL	2017	2507
TANK & FITTINGS	3251	1572
OIL	2320 L	4900
TOTAL	12330	5543

CARTE INTERNATIONAL INC.  
 WINNIPEG, CANADA

TITLE: 3 PH. POWER TRANSFORMER

Desg. PD 20000007 RVA

Dwg. PD 0142

DWG 18/10/94

Scale NTS

PH 00340

C 00

S.D. 420205  
 P.O. 494571280  
 SPEC. IECAN-25A-C3-MR  
 TEMP. RISE 30DEGREE C  
 PRIMARY VOLTAGE 4800 BELTA  
 SECONDARY VOLTAGE 200V/250  
 PRIMARY FOC MATERIAL  
 SECONDARY COIL BELTA