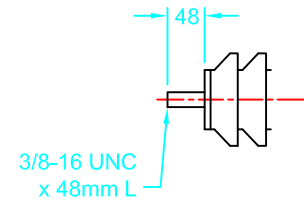
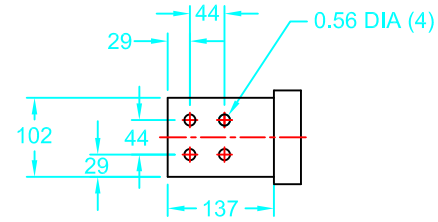


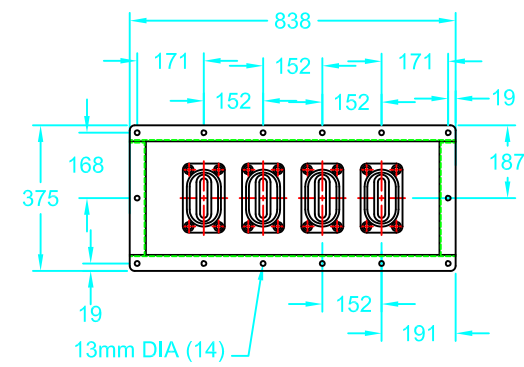
THE INFORMATION CONTAINED HEREON WHICH IS THE PROPERTY OF STEIN INDUSTRIES INC., MUST BE MAINTAINED IN CONFIDENCE AND NO PORTION OF THIS DRAWING MAY BE REPRODUCED OR USED, WITHOUT THE EXPRESS WRITTEN PERMISSION OF THE COMPANY.



H.V. BUSHING SPADE DETAIL

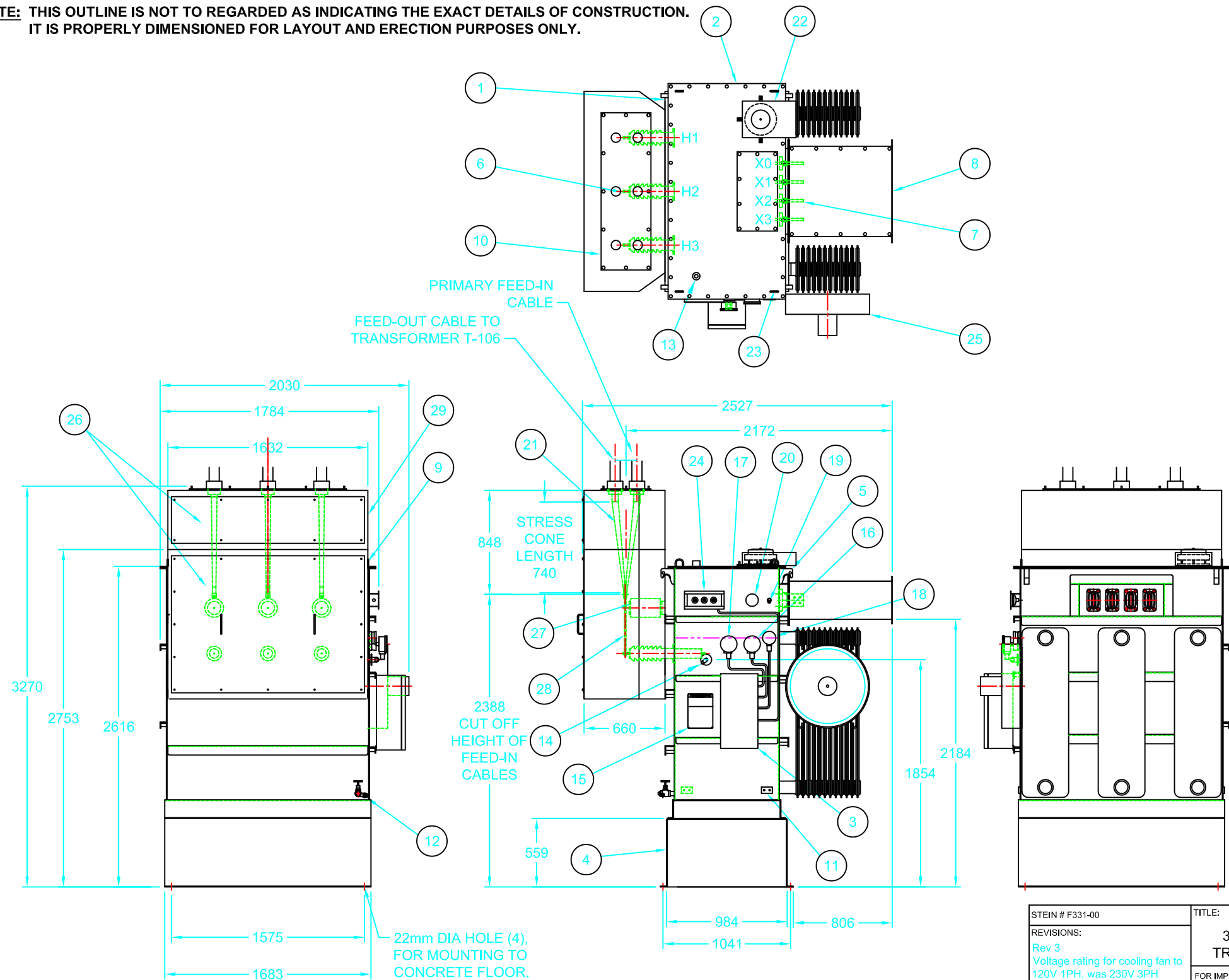


L.V. BUSHING SPADE DETAIL



L.V. THROAT FLANGE DETAIL

**NOTE:** THIS OUTLINE IS NOT TO BE REGARDED AS INDICATING THE EXACT DETAILS OF CONSTRUCTION. IT IS PROPERLY DIMENSIONED FOR LAYOUT AND ERECTION PURPOSES ONLY.



- | ITEM | DESCRIPTION  |
|------|--|
| 1.   | TANK, ALL WELDED CONSTRUCTION.                                     |
| 2.   | TANK COVER, BOLTED ON.   |
| 3.   | CONTROL BOX FOR TERMINATING CONTROL WIRES, (SEE DWG C00163).       |
| 4.   | SUB BASE.  |
| 5.   | LIFTING LUGS.  |
| 6.   | H.V. BUSHING, PORCELAIN INSULATOR.                                 |
| 7.   | L.V. BUSHING, SEE SPADE DETAIL.                                    |
| 8.   | L.V. JUNCTION BOX WITH REMOVABLE TOP.                              |
| 9.   | H.V. MAIN JUNCTION BOX.  |
| 10.  | H.V. JUNCTION BOX TOP COVER.                                       |
| 11.  | GROUND PADS DRILLED & TAPPED<br>1/2"-13 ON 44.5mm CENTRES.         |
| 12.  | GLOBE VALVE WITH SAMPLING VALVE.                                   |
| 13.  | 1" PIPE PLUG FOR FILLING.  |
| 14.  | TAP CHANGER HANDLE   |
| 15.  | DIAGRAM NAMEPLATE.   |
| 16.  | OIL TEMPERATURE INDICATOR WITH CONTACTS SET AT 95°C & 105°C.       |
| 17.  | WINDING TEMPERATURE INDICATOR WITH CONTACTS SET AT 90°C & 100°C.   |
| 18.  | LIQUID LEVEL GAUGE WITH LOW LEVEL ALARM CONTACTS.                  |
| 19.  | PRESSURE RELIEF VALVE (35 kPa).                                    |
| 20.  | PRESSURE/VACUUM GAUGE ±100 kPa.                                    |
| 21.  | STRESS CONES.  |
| 22.  | EMERGENCY PRESSURE RELIEF DEVICE.                                  |
| 23.  | LIFTING LOOPS FOR TANK COVER ONLY.                                 |
| 24.  | C.T. FEED THRU BUSHINGS(2) FOR ITEM 17 AND CORE GROUND BUSHING(1). |
| 25.  | FAN, 1/4 HP, 1140 RPM 120V., 1PH.                                  |
| 26.  | H.V. JUNCTION BOX FRONT COVERS                                     |
| 27.  | HV PORCELAIN STANDOFF BUSHING.                                     |
| 28.  | BUS BARS, 3/8" x 2" x 24" LG.                                      |
| 29.  | H.V. JUNCTION BOX, TOP SECTION                                     |

**NOTE:**  
FOLLOWING ITEMS ARE SHIPPED SEPARATELY FROM THE TRANSFORMER ASSEMBLY.

- CONTROL BOX, ITEM #3.
- TOP SECTION OF HV JUNCTION BOX, ITEM #29
- FAN, ITEM #25.
- WINDING TEMPERATURE GAUGE, ITEM #17. MAIN BODY REMAINS IN TANK.
- COVER FOR ITEM #24.

| UNIT INFORMATION |                          |
|------------------|--------------------------|
| KVA:             | 1500/2000 (WITH FAN)     |
| H.V.:            | 27600 V                  |
| L.V.:            | 600Y/347 V.              |
| TAPS:            | 5 x 2.5%, 2 FCAN, 2 FCBN |
| B.I.L.:          | H.V. 150 kV, L.V. 45kV   |
| FREQUENCY:       | 60 Hz                    |
| R-TEMP:          | 1500 L                   |
| TYPE:            | LNAN/ LNAF (WITH FAN)    |
| SPECIFICATION:   | C88-M90                  |
| FINISH:          | ANSI 61 GREY             |
| MASS:            |                          |
| CORE AND COIL:   | 2615 kg                  |
| TANK & BOXES:    | 2025 kg                  |
| FLUID:           | 1360 kg                  |
| TOTAL:           | 6000 kg                  |

TERMINAL T-103

|   |                                       |   |          |
|---|---------------------------------------|---|----------|
| STEIN # F331-00   | TITLE: OUTLINE-3 PH POWER TRANSFORMER | STEIN INDUSTRIES INC. LONDON, ONTARIO, CANADA |          |
| REVISIONS:<br>Rev 3<br>Voltage rating for cooling fan to 120V 1PH, was 230V 3PH | FOR IMPLIED TOLERANCES SEE            | DIMENSIONS IN mm UNLESS SPECIFIED OTHERWISE   |          |
| DRAWN: P WHITE  | DATE: 01/03/13                        | DWG. # LF331001                               | REV. # 3 |
| APP: PW, 01/10/31   | DATE:                                 |   |          |