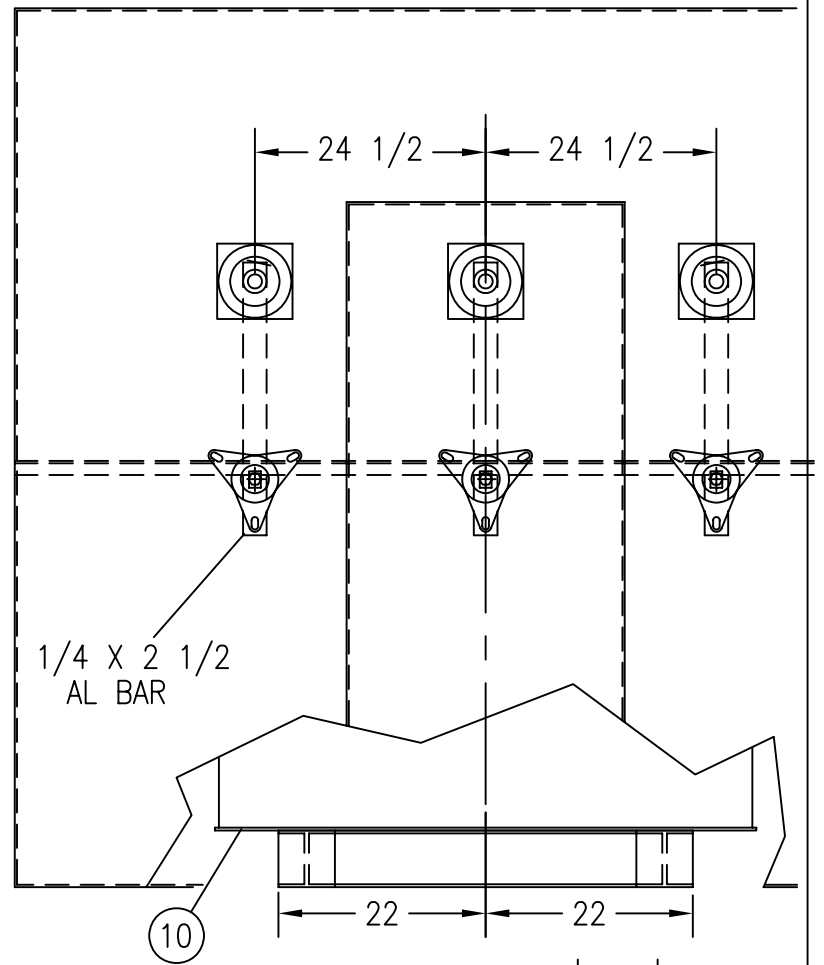
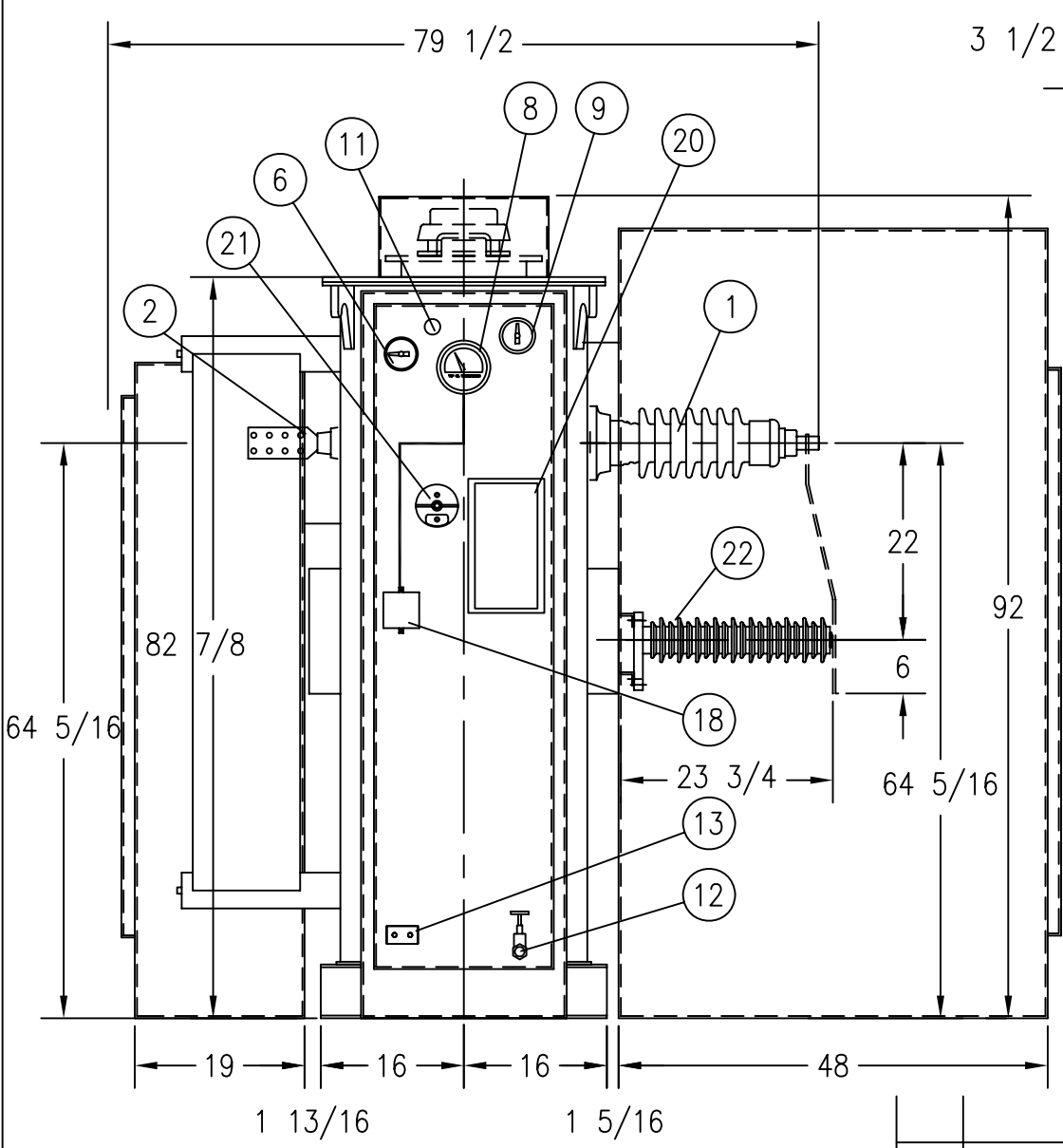
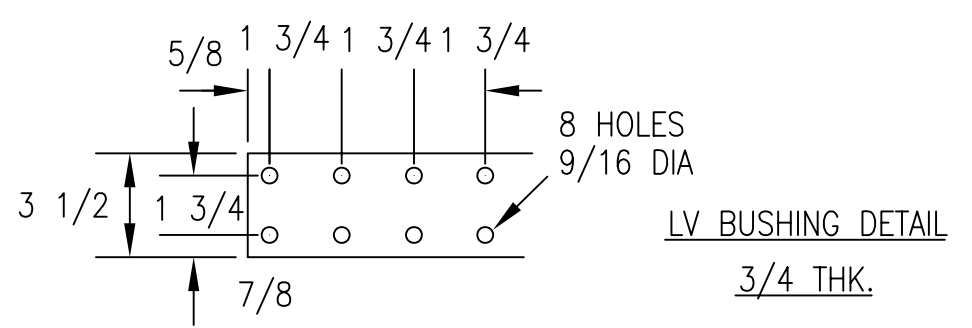


- 1 HV BUSHINGS 50 KV 400 A.
N.T.#11220 c/w 1 1/2-12 TH'D STUD 2 1/2 LG
- 2 LV BUSHINGS 1.2 KV 2500 A.
N.T.#1045-1 (90-182) SEE DETAIL
- 3 HV BOX C/W HINGED PADLOCKING DOOR
& OPEN BOTTOM (TAMPER RESISTANT)
- 4 LV BOX C/W HINGED PADLOCKING DOOR
& OPEN BOTTOM (TAMPER RESISTANT)
- 5 INSTRUMENT CABINET C/W HINGED PADLOCKING
DOOR & OPEN BOTTOM (TAMPER RESISTANT)
- 6 MAGNETIC OIL GAUGE QUALITROL #1-30AC
- 7 PRESSURE RELIEF DEVICE (TAMPER RESISTANT)
QUALITROL #208-60U
- 8 TOP OIL THERMO. C/W 2 CONTACTS
CLOSING AT 75°C & 90°C
QUALITROL #167-224-03
- 9 PRESSURE-VACUUM GAUGE QUALITROL #50-35E
- 10 JACKING AREA
- 11 1" TOP FILTER PRESS CONNECTION, CAPPED
- 12 1" DRAIN GLOBE BRASS VALVE C/W 3/8" SAMPLER
- 13 2 S.S. GROUND PADS C/W 1/2" UNC
TAPPED HOLES @ 1-3/4" CTRS.
- 14 COOLING RADIATORS
- 15 TRANSFORMER LIFTING LUGS
- 16 COVER LIFTING LUGS
- 17 HANDHOLE BOLTED C/W TAMPER RESISTANT COVER
- 18 THERMOMETER LEAD TERMINATING BOX SEE TA-7283
- 19 WELDED COVER
- 20 RATING PLATE DWG. NO. 2184-020B
- 21 TAP CHANGER HANDLE c/w PADLOCKING PROVISION
- 22 LIGHTNING ARRESTORS 48 KV 39 KV MCOV
COOPER INTERMEDIATE CLASS #UI048A
- 23 XO GROUND 500 MCM



TANK SIZE :	27 X 64 X 76 H	
PAINT :	ASA 70 GREY	
ESTIMATED WTS	lb	kg
CORE & COILS	5049	2290
TANK & FITTINGS	5107	2317
OIL 389 G. 1768 l.	3344	1517
TOTAL	13500	6214

REV.	REMARKS	BY:	DATE:
Northern Transformer INCORPORATED			
PLOT 1=20	DRAWN BY: KENDRA WATKINS	DATE: OCT 29/07	REV. 0
JOB:	CHECKED BY:	DATE:	S.O. NO. 06-2184
TITLE: 1000 KVA OIL FILLED TRANSFORMER ONAN 44000-600Y/347 V 3 PH 60 HZ 65°C		DRAWING NO. 2184-010B	
WHITBY HYDRO			