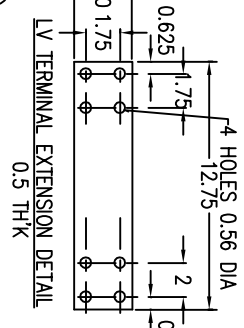
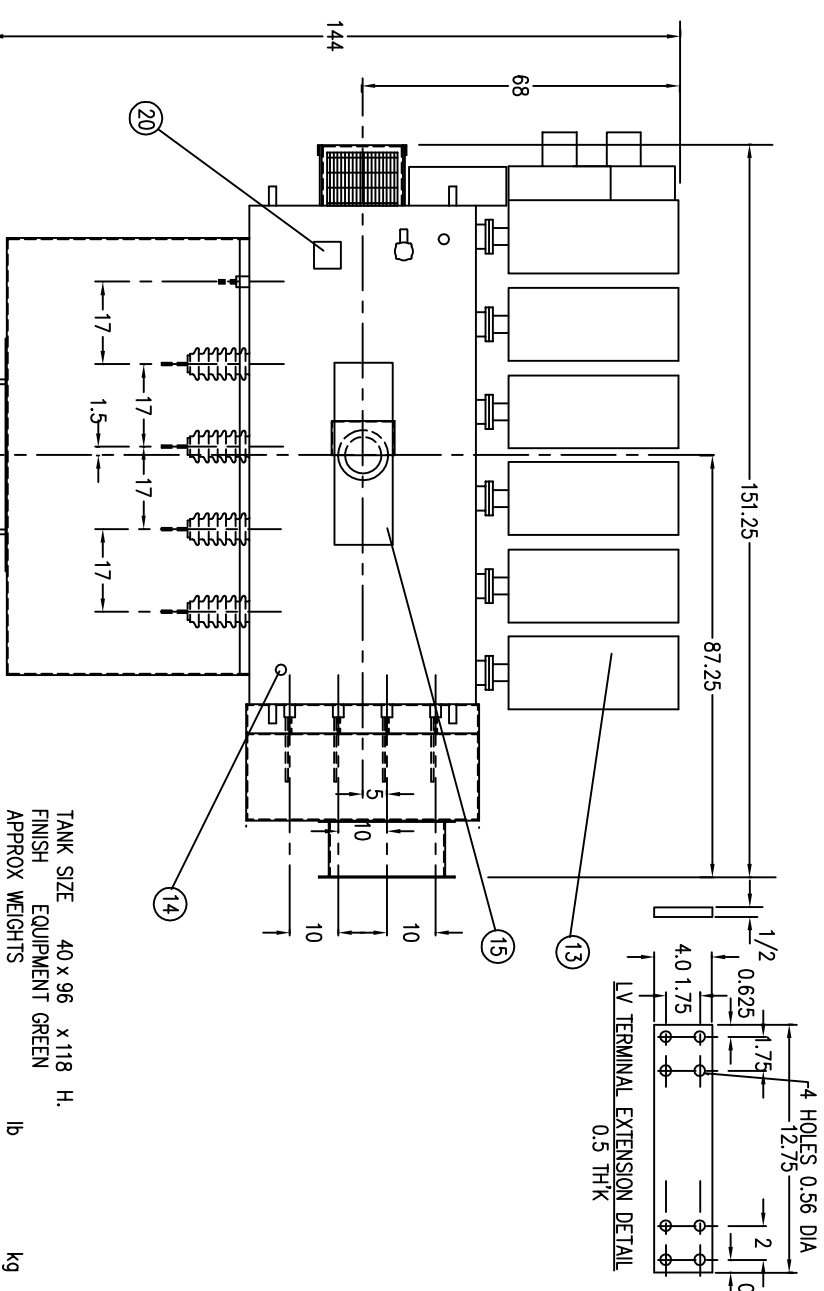
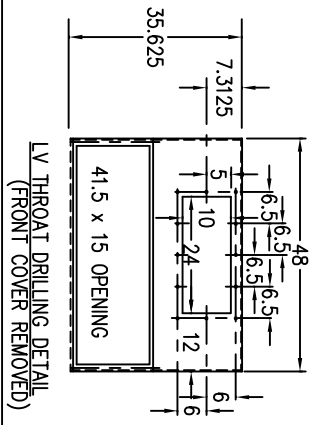
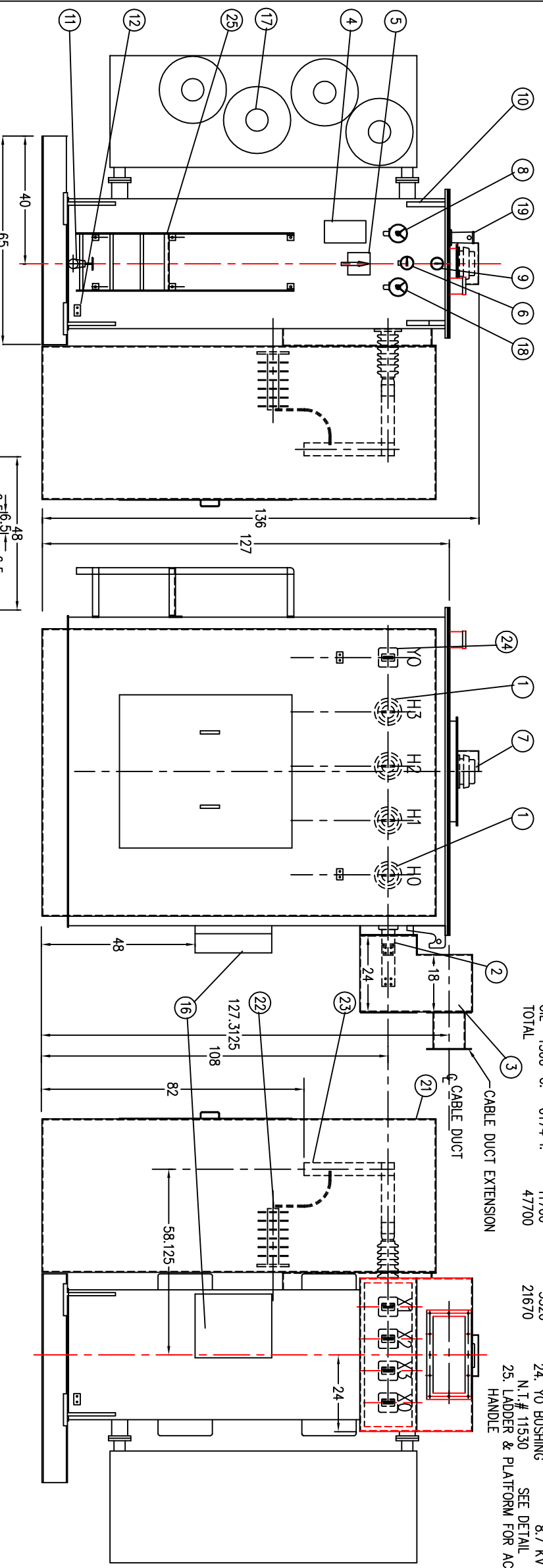


8" WF BEAM BASE-INVERTED VIEW



TANK SIZE 40 x 96 x 118 H.  
 FINISH EQUIPMENT GREEN  
 APPROX WEIGHTS  
 CORE & COLLS 26000 lb  
 TANK & FITTINGS 10000  
 OIL 1360 G. 6174 l. 11700  
 TOTAL 47700

- 1. 4 HV BUSHINGS 34.5 KV 442 A. WABCO # 41A05168-1
- 2. 4 LV BUSHINGS 8.7 KV 2500 A. N.T.# 11530 SEE DETAIL
- 3. LV THROAT 48 x 20 TO MATCH EXISTING SEE DETAIL
- 4. RATING PLATE DWG. NO. TB-5908
- 5. TAP CHANGER HANDLE(PADLOCKABLE)
- 6. MAGNETIC OIL GAUGE c/w CONTACTS QUALITROL 035-039-01
- 7. PRESSURE RELIEF DEVICE
- 8. QUALITROL 208-60U c/w SHROUD & CONTACT TOP OIL THERMO. c/w 2 CONTACTS QUALITROL 167-224-01
- 9. PRESSURE-VACUUM GAUGE & SWITCH QUALITROL 50-35E & 148-012
- 10. TRANSFORMER LIFTING LUGS
- 11. 2" DRAIN VALVE c/w 3/8" SAMPLER
- 12. 2 S.S. GROUND PADS c/w CONNECTOR FOR FOR UP TO 4/0 COPPER CABLE
- 13. COOLING RADIAITORS/DETACHABLE WITH VALVES)
- 14. 1" TOP FILTER PRESS CONNECTION, GAPPED
- 15. HANDHOLE c/w BOLTED COVER
- 16. FAN CONTROL CABINET(20 x 24) SEE DWG TC-5909
- 17. COOLING FANS 1/3 HP 120 V(4)
- 18. WINDING TEMP INDICATOR c/w 2 CONTACTS QUALITROL 167-235-01(CS15098)
- 19. RAPID RISE PRESSURE RELAY c/w CONTACTS & SEAL-IN RELAY QUALITROL 910-010-01 & 909-200-0
- 20. C.T. OUTLET BOX c/w DETACHABLE CORE GROUND
- 21. HV BOX FULL HEIGHT c/w FRONT ACCESS PLATE, OPEN BOTTOM
- 22. HV LIGHTNING ARRESTOR 21 KV 17 KV MCOV OB# PNV314017
- 23. HV CONNECTOR 250 MCM COMPRESSION TYPE ILSCO # CRA-250L2 (ONE PER PHASE)
- 24. YO BUSHING 8.7 KV 2500 A. N.T.# 11530 SEE DETAIL
- 25. LADDER & PLATFORM FOR ACCESS TO TAP CHANGER HANDLE



REV	DESCRIPTION	DATE
1	LV THROAT OPENING WAS AT 95.38	3/27/95
2	ITEM 16 WAS AT INSTRUMENT END	4/10/95
3	CABLE DUCT EXTENSION ADDED,REVISED TO WAY BUILT	5/10/95
4	NO MOVED TO RIGHT HAND SIDE	4/10/95

Northern Transformer Incorporated

PROJECT	1-25	DRAWN BY	MS	DATE	2/19/94	REV	2
JOB	KODAK	APPROVED BY	PT	DATE	2/20/94	SQ. NO.	94-1113
TITLE	10000/11250/13333/15000 KVA OIL FILLED TRANSFORMER ONAN/ONAF 27600Y/16000-4160Y/2400-4160 V. 3PH 60 HZ 55/65°C RISE						
DRAWING NO.	TB-5907						